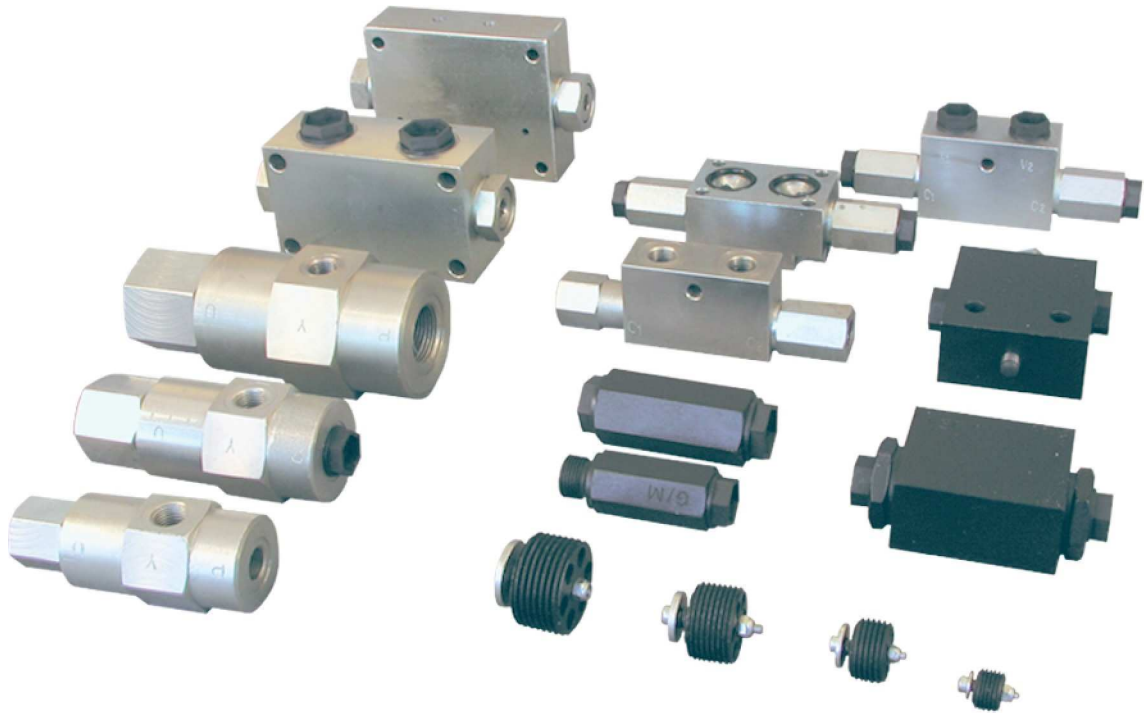




<http://www.oookfg.narod.ru>  
e-mail: [kama-hydraulic@narod.ru](mailto:kama-hydraulic@narod.ru)  
т/ф (8552) 44-33-58

Общество с ограниченной ответственностью  
**«Кама-Флекс Гидравлика»**

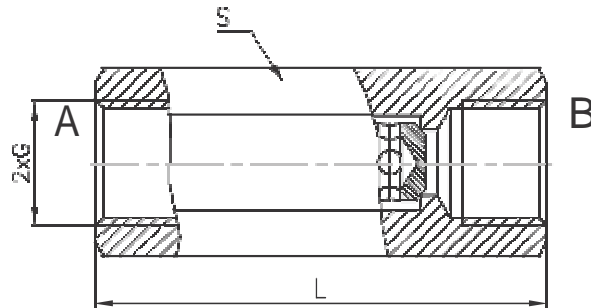
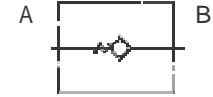




<http://www.oookfg.narod.ru>  
 e-mail: kama-hydraulic@narod.ru  
 т/ф (8552) 44-33-58

# CHECK VALVE

## KO- ..



Type	$Q_{max}$	$P_{max.}$	Opening pressure of the check valve	L	S	2xG
	L/min	bar		bar	mm	mm
KO-14	25	320	0,5	60	19	G1/4"
KO-38	25		0,5	60	24	G3/8"
KO-12	40		0,3	75	27	G1/2"

All performances and calibration are carried out by using hydraulic oil with viscosity approx. 46 cSt at 50 °C  
 Temperature range: -20°C...+80°C  
 Filtration absolute: 63 µm

### ORDERING CODE

**KO-14**

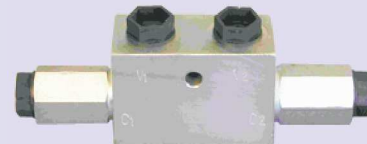
Type

Port threads G: **14,38,12**



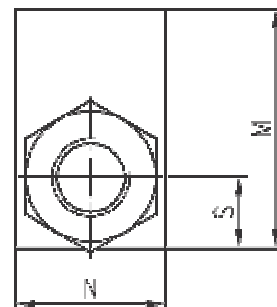
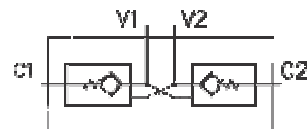
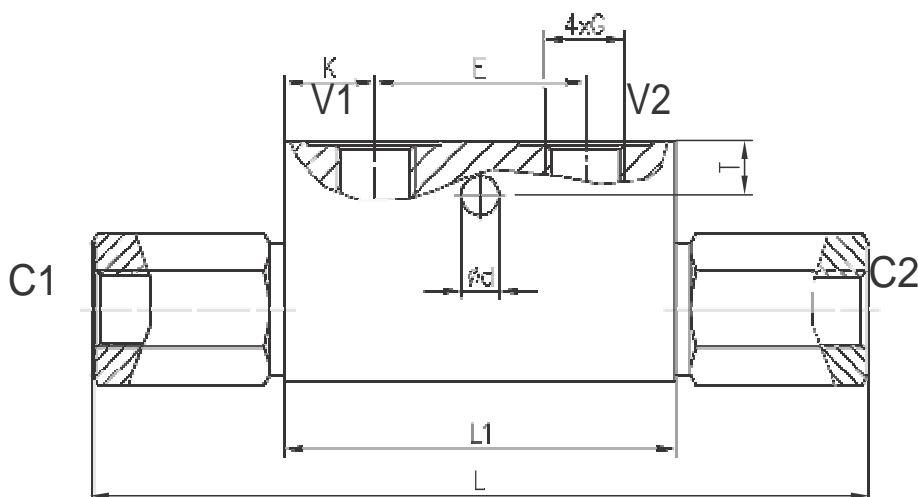
<http://www.oookfg.narod.ru>  
 e-mail: kama-hydraulic@narod.ru  
 т/ф (8552) 44-33-58

## DUAL OR SINGLE PILOT OPERATED CHECK VALVE

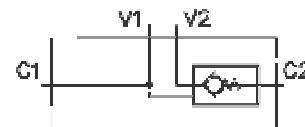
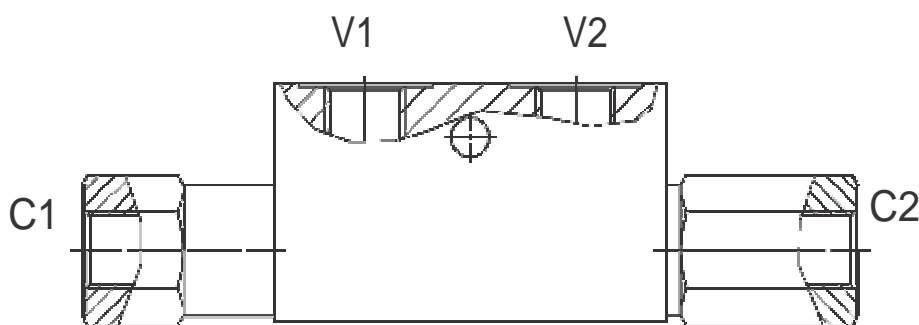


### VBD .. and VBS ..

#### VBD



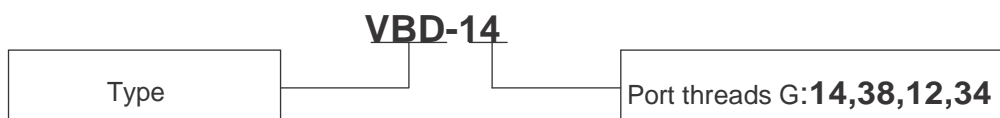
#### VBS



Type	Q <sub>max</sub>	P <sub>max.</sub>	Pilot ratio	G	L	L1	M	N	S	T	d	K	E
	L/min	bar			mm	mm	mm	mm	mm	mm	mm	mm	mm
VBD-14(VBS-14)	25	350	4:1	G 1/4	129	65	40	25	12	9	6.5	15	35
VBD-38(VBS-38)	35		4:1	G 3/8	129	65	45	30	15	12	6.5	15	35
VBD-12(VBS-12)	50		4:1	G 1/2	163	79	50	35	16	15	6.5	20.5	38
VBD-34(VBS-34)	100		3.6:1	G 3/4	185	100	60	40	21	15	8.5	25	50

All performances and calibrations are carried out by using hydraulic oil with viscosity approx. 46 cSt at 50 °C  
 Temperature range:-20 °C...+80 °C. Filtration absolute: 25 µm

### ORDERING CODE

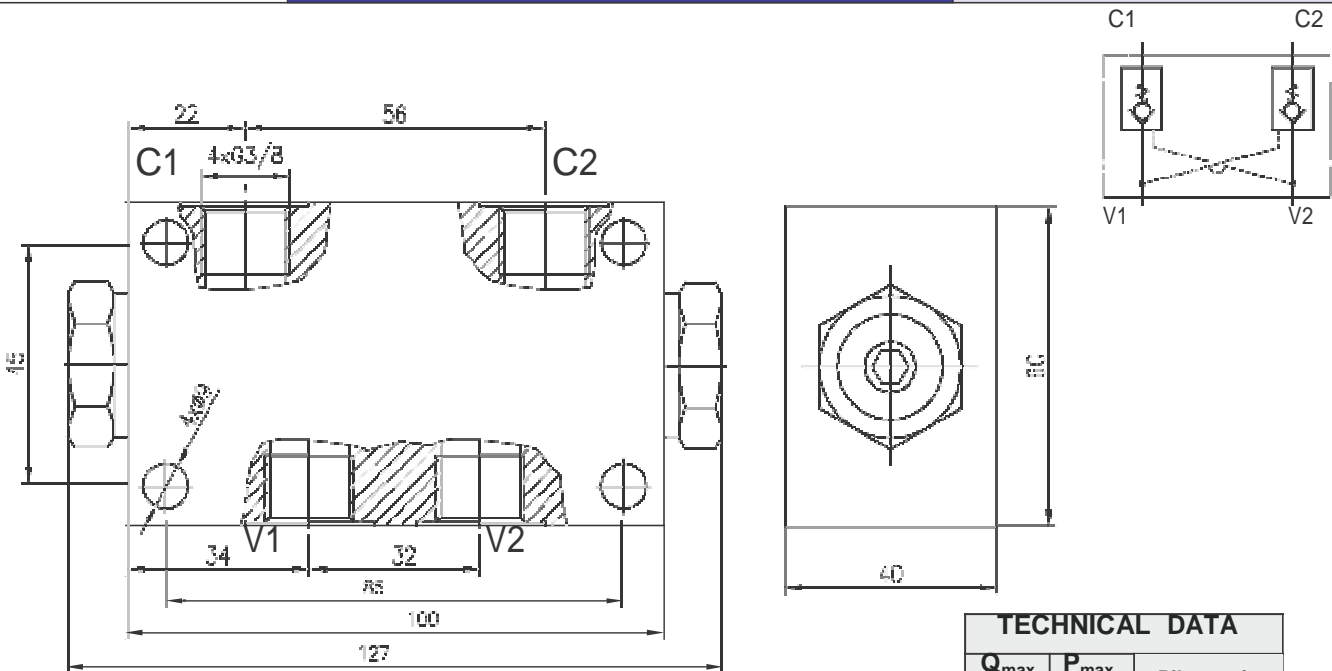




http://www.oookfg.narod.ru  
 e-mail: kama-hydraulic@narod.ru  
 т/ф (8552) 44-33-58

## DUAL PILOT OPERATED CHECK VALVE

### BP2/10-38



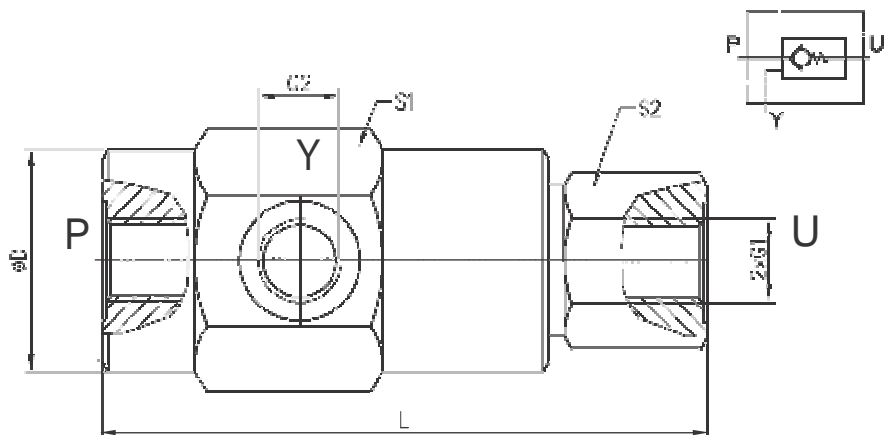
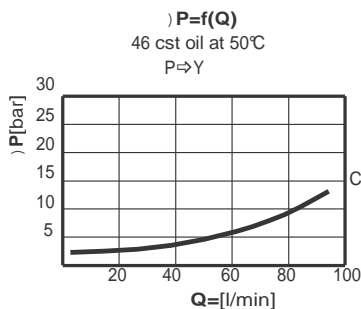
All performances and calibrations are carried out by using hydraulic oil with viscosity Approx. 46 cSt at 50 °C Temperature range:-20 °C...+80 °C. Filtration absolute: 25 µm

TECHNICAL DATA		
Q <sub>max</sub> L/min	P <sub>max.</sub> bar	Pilot ratio
30	350	5:1

## PILOT OPERATED CHECK VALVES, EXTERNAL PILOT OPERATED TYPE, SINGLE ACTING LINE MOUNTING



### CAR.SP ..



Type	Q <sub>max</sub>	P <sub>max.</sub>	Pilot ratio	G <sub>1</sub>	G <sub>2</sub>	S <sub>1</sub>	S <sub>2</sub>	D	L
	L/min	bar				mm	mm		
CAR.SP14	15	400	3.1:1	G1/4	G1/4	36	24	35	95
CAR.SP38	30	350	3.5:1	G3/8		41	32	40	105
CAR.SP12	45		2.8:1	G1/2		46	36	45	115
CAR.SP34	80		3.4:1	G3/4		55	41	54	135

All performances and calibrations are carried out by using hydraulic oil with viscosity approx. 46 cSt at 50 °C. Temperature range:-20 °C...+80 °C. Filtration absolute: 25 µm

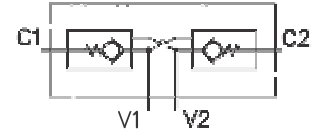
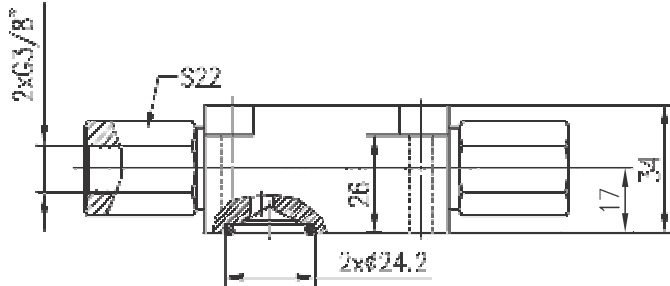
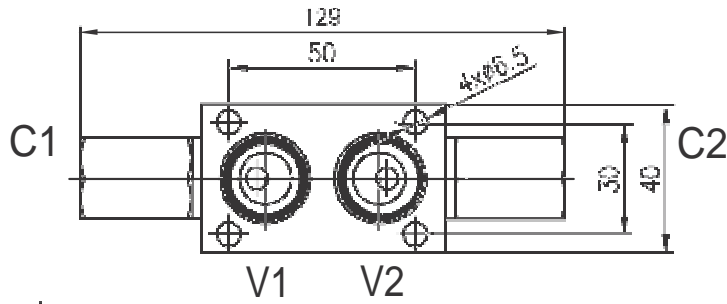


<http://www.oookfg.narod.ru>  
 e-mail: kama-hydraulic@narod.ru  
 т/ф (8552) 44-33-58

## DUAL PILOT OPERATED CHECK VALVE



### VBD-R-38



TECHNICAL DATA		
Maximal pressure	bar	350
Nominal flow rate	L/min	35
Pilot ratio		4:1

All performances and calibration are carried out by using hydraulic oil with viscosity approx. 46 cSt at 50 °C  
 Temperature range: -20 °C...+80 °C.  
 Filtration absolute: 25µm

**Для получения  
дополнительной  
информации по  
данному  
продукту  
просим Вас  
связаться с нами  
по тел. (8552) 44-  
33-58**

ООО «Кама-Флекс-Гидравлика»

e-mail: [kama-hydraulic@narod.ru](mailto:kama-hydraulic@narod.ru)

<http://www.oookfg.narod.ru>