

OPTIONS

- » Model- Spool valve, roll-gerotor;
- » Dual shaft;
- » Oval flange;
- » Side port;
- » Straight shafts;
- » BSPP ports;
- » Other special features.

APPLICATION

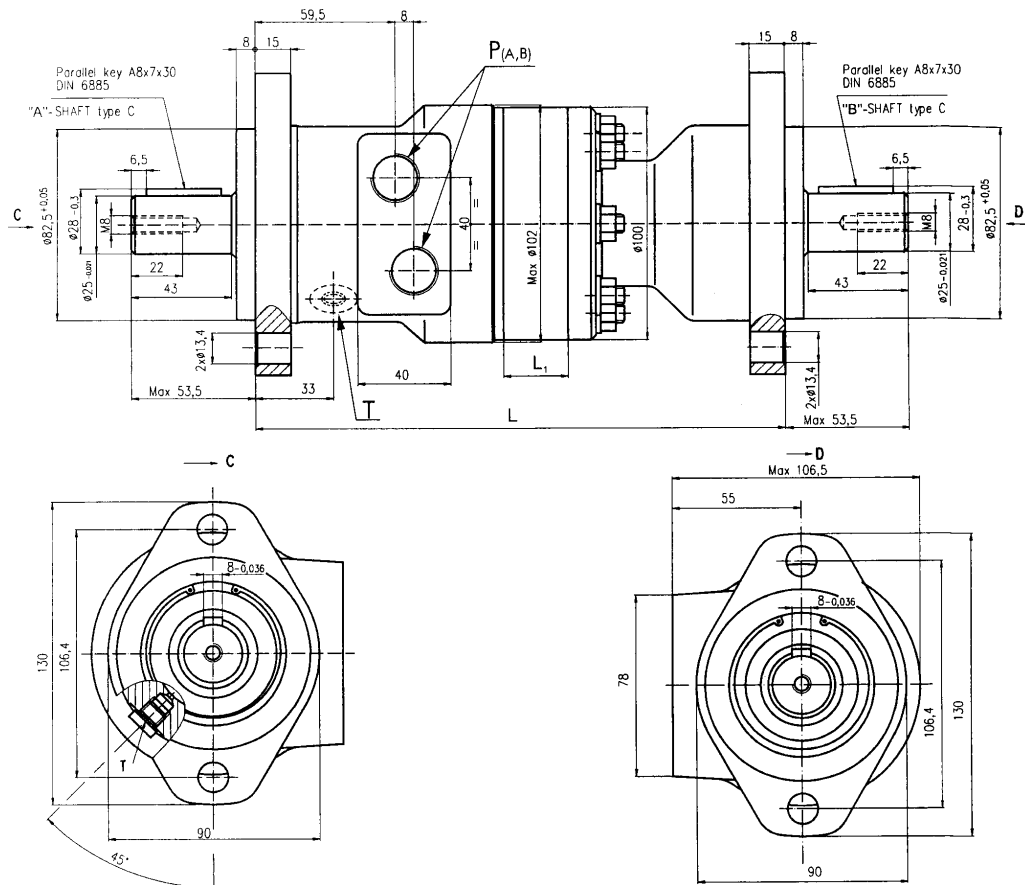
- » Conveyors;
- » Feeding mechanism of robots and manipulators;
- » Metal working machines;
- » Textile machines;
- » Machines for agriculture;
- » Food industries;
- » Mining machinery etc.

SPECIFICATION DATA

Type	50 C/C	80 C/C	100 C/C	125 C/C	160 C/C	200 C/C	250 C/C	315 C/C	400 C/C
Displacement, cm ³ /rev.	51,5	80,3	99,8	125,7	159,6	199,8	250,1	315,7	397
Max. Speed, RPM	cont. 775 int.* 970	750 940	600 750	475 600	375 470	300 375	240 300	190 240	150 190
Max. Torque, daNm	cont. 10 int.* 13	19,5 22	24 28	30 34	30 39	30 39	30 38	30 42	30 43
Max. Torque "A" Shaft, daNm	cont. 8 int.* 9,5	11,5 13	12 14	20 23	20 23	20 23	20 23	20 23	20 23
Max. Torque "B" Shaft, daNm	cont. 4 int.* 5	11,5 13	12 14	20 23	20 23	20 23	20 23	20 23	20 23
Max. Output, [kW]	cont. 7 int.* 8,5	12,5 15	13 15	12,5 14,5	10 12,5	8 10	6 8	5 6,5	4 6
Max. Pressure Drop, bar	cont. 140 int.* 175	175 200	175 200	175 200	130 175	110 140	80 110	70 100	55 80
Max. Oil Flow, lpm	cont. 40 int.* 50	60 75	60 75	60 75	60 75	60 75	60 75	60 75	60 75
Max. Return Pressure without Drain Line, bar	cont. 0 - 100 RPM cont. 100-200 RPM cont. 200-500 RPM int.* 0 - max RPM	75 50 20 75	75 50 20 75	75 50 20 75	75 50 20 75	75 50 20 75	75 50 20 75	75 50 20 75	75 50 20 75

* Intermittent operation: the permissible values may occur for max. 10% of every minute.

OUTLINE DIMENSINS REFERENCE

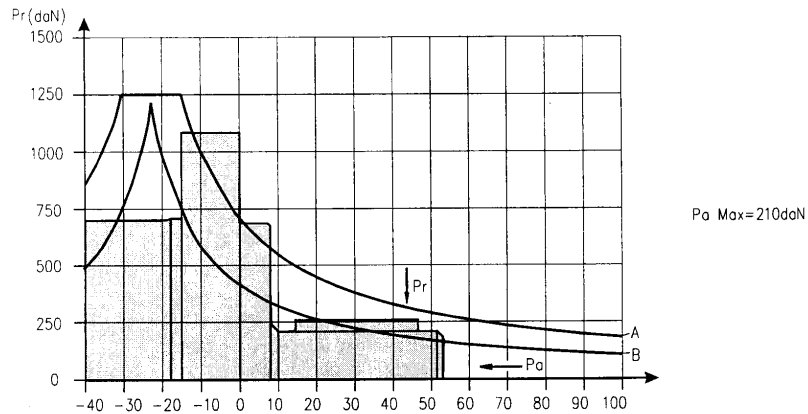


P_(A, B): 2xG1/2 - 18 mm depth
T : G1/8 - 9 mm depth (plugged)

Type	L, mm	L ₁ , mm
50	208,0	9,0
80	213,0	14,0
100	216,0	17,4
125	220,5	21,8
160	226,5	27,8
200	233,5	34,8
250	242,5	32,5
300	253,5	39,3
400	268,0	52,4

PERMISSIBLE SHAFT LOADS

The load diagrams are valid for an average bearings life of 1600 hrs at 200 r.p.m. with mineral base lubricating containing antiwear additives (ref.ISO 281 (3.3)standard).
 The "A" curve gives the maximum static load affordable by the bearings.
 The "B" curve gives the radial load top limit without axial load of 200 daN.



ORDER CODE

1	2	3	4	5	6
MRB		/			

Pos. 1 - Displacement code

- 50 - 51,5 [cm³/rev]
- 80 - 80,3 [cm³/rev]
- 100 - 99,8 [cm³/rev]
- 125 - 125,7 [cm³/rev]
- 160 - 159,6 [cm³/rev]
- 200 - 199,8 [cm³/rev]
- 250 - 250,1 [cm³/rev]
- 315 - 315,7 [cm³/rev]
- 400 - 397,0 [cm³/rev]

Pos. 2 - "A" Shaft Extensions

- C - ø25 straight, Parallel key A8x7x32 DIN6885

Pos. 3 - "B" Shaft Extensions

- C - ø25 straight, Parallel key A8x7x32 DIN6885

Pos. 4 - Special Features

- omit - none
- LSV - Low Speed Valve

Pos. 5 - Option (Paint)*

- omit - no Paint
- P - Painted
- PC - Corrosion Protected Paint

Pos. 6 - Design Series

- omit - Factory specified

NOTES:
 * Color at customer's request.

The hydraulic motors are manganese-phosphatized as standard.